

GENERAL NOTES: DONNA DRIVE DOES NOT MEET BROWN COUNTY ROAD AND STREET SPECIFICATIONS FOR NEW ROADS AND STREETS IN SUBDIVISIONS AND CANNOT BECOME A COUNTY OR TOWNSHIP ROAD. THEREFORE, ALL LOTS CONTAINED IN THIS PLAT ARE SUBJECT TO A 50.00 FEET WIDE EASEMENT AS SHOWN HEREON.

BOARD OF HEALTH APPROVAL: REVIEWED AND APPROVED BY BROWN COUNTY BOARD OF HEALTH ON THIS 9th DAY OF NOVEMBER, 1992. BY: Joseph W. R.S. COUNTY INSPECTOR

ENGINEER'S APPROVAL: PLAT REVIEWED AND APPROVED THIS 6th DAY OF NOVEMBER, 1992. BY: James Beasley BROWN COUNTY ENGINEER

COMMISSIONER'S APPROVAL: WE THE UNDERSIGNED COMMISSIONERS OF BROWN COUNTY, OHIO DO HEREBY APPROVE THIS PLAT OF "PARKER SUBDIVISION". ATTEST: Mary M. Watson CLERK OF BOARD OF COMMISSIONERS DATE: January 6, 1993 BROWN COUNTY COMMISSIONERS

R. M. Soren
Jim Ferguson
Carl Berger

OWNERS ACKNOWLEDGEMENT: WE THE UNDERSIGNED, OWNERS OF THE LAND PLATTED, DO HEREBY ACKNOWLEDGE AND ADOPT THIS AS A TRUE PLAT OF "PARKER SUBDIVISION". WE FURTHER ACKNOWLEDGE THAT DONNA DRIVE SHALL REMAIN A PRIVATE ROAD. WE ALSO HEREBY GRANT A 25.00' WIDE EASEMENT TO THE BROWN COUNTY COMMISSIONERS, ON THE NORTH SIDE OF BARDWELL WEST ROAD (T-6).

Donna J. Parker
DONNA J. PARKER
Stephen Lee Parker
STEPHEN LEE PARKER
Cynthia D. Parker
CYNTHIA D. PARKER
SWORN BEFORE ME AND SIGNED IN MY PRESENCE THIS 13th DAY OF NOVEMBER, 1992.
Lee Parker LEE PARKER
NOTARY PUBLIC
My Commission Expires May 1, 1993
MY COMMISSION EXPIRES, _____

CERTIFICATION OF SURVEYOR: I DO HEREBY THIS SUBDIVISION PLAT OF THE LAND OWNED BY DONNA J. PARKER AND STEPHEN LEE PARKER IS A CORRECT REPRESENTATION OF THE LAND SURVEYED AND PLATTED AND THAT ALL LOT CORNERS HAVE BEEN MARKED AS INDICATED.
Gerald Hart Wallingford
G.H. WALLINGFORD REG. LAND SURVEYOR NO. 6658
THE G.H. WALLINGFORD COMPANY
149 HIGH STREET
PEEBLES, OHIO 45660
(513) 587-3428



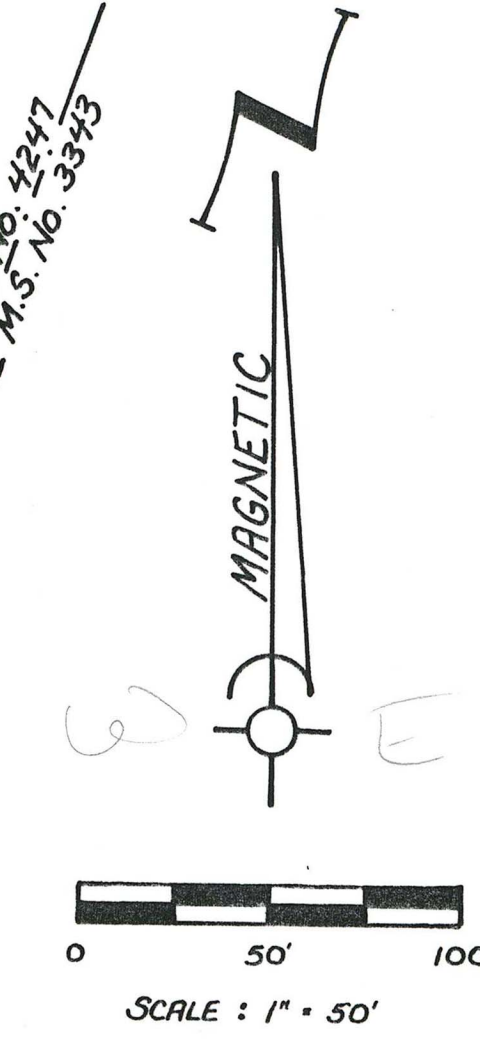
SURVEY PLAT OF
"PARKER SUBDIVISION"
DONNA J. AND STEPHEN LEE PARKER
AND CYNTHIA D. PARKER
STERLING TWP. - BROWN CO.
PART OF WILLIAM LYTLE'S M.S. NO. 4247
PART OF J. HARVIE'S M.S. NO. 3343
6.330 ACRES
Vol. 257 Pg. 41
AUGUST 1992

This conveyance has been examined and is in compliance with the provisions of RC Sec. 319.202. DATE: 11/10/93
CONVEYANCE FEE \$ 127.00
TRANSFER FEE \$ 127.00
Harold E. Ernst
Brown County Auditor

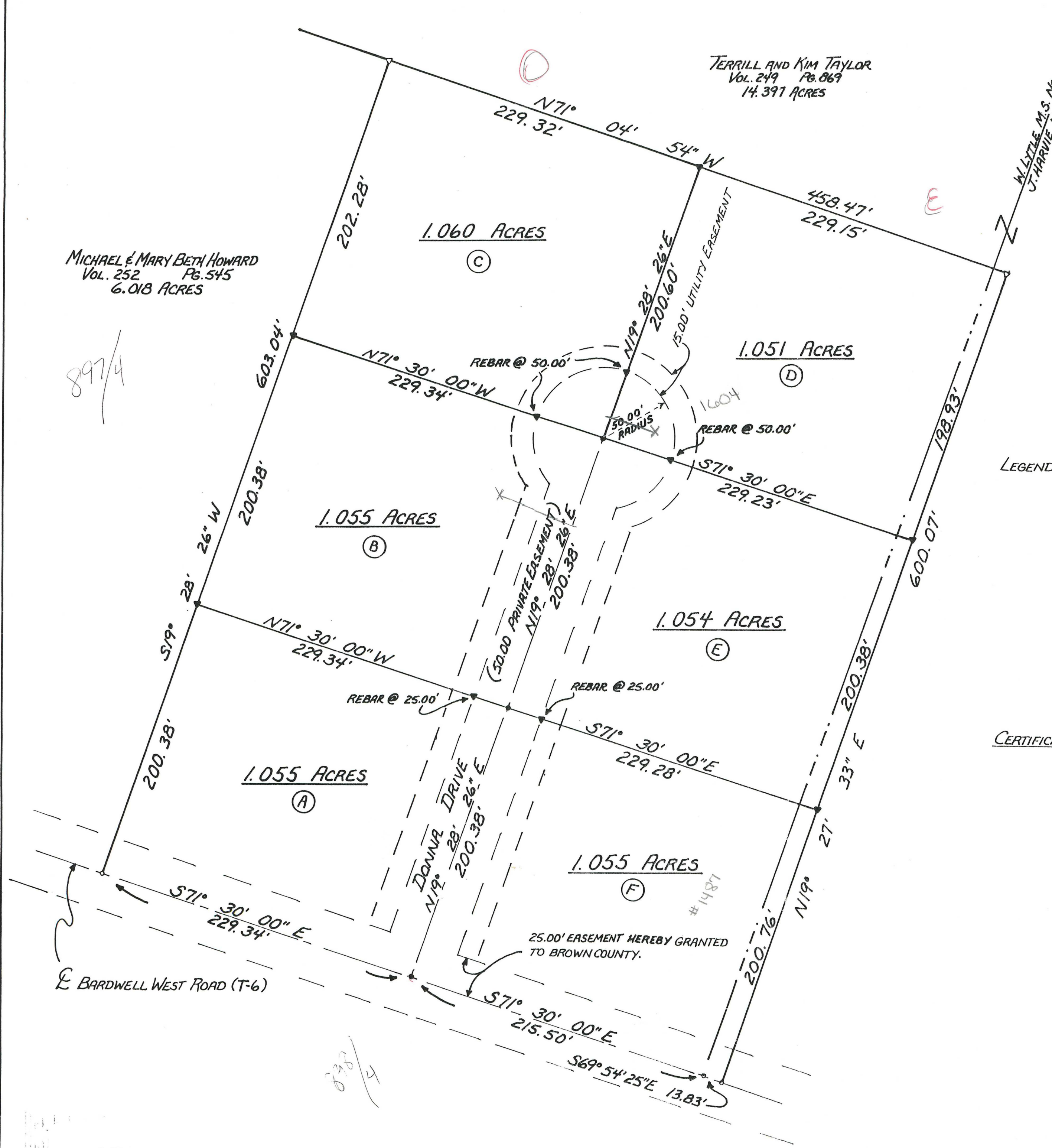
MICHAEL & MARY BETH HOWARD
Vol. 252 Pg. 545
6.018 ACRES

TERRILL AND KIM TAYLOR
Vol. 249 Pg. 869
14.397 ACRES

W. LITTLE M.S. NO. 4247
J. HARVIE M.S. NO. 3343



- LEGEND:
- SPIKE (FOUND)
 - ▽ 5/8" REBAR (FOUND)
 - SPIKE (SET)
 - ▼ 1" IRON PIN (SET)



NOV 23 1992